

Covid Impact on Sports Pitch Bookings and Update on the Playing Pitch Strategy

APPENDIX A



Covid Impact on football



Bookings stopped between mid March and May 2020



Bookings stopped for 1 month during November 2020



Bookings stopped for 3 months from January to March 2021



Football season extended for 6 weeks from May to mid June

2018/19 Football Data

LAST FULL SEASON

- Mini Soccer 229 games (£5,267)
- Junior 572 games (£19,734)
- Adult 163 games (£14,344)
- **Total income £39,345**



2019/20 Football Data

POTENTIAL LOST INCOME/MATCHES

- Mini Soccer games 42 (£924)
- Junior games 154 (£5,082)
- Adult games 42 (£3,486)
- **Total 238 games £9,492**



2020/21 Football Data

POTENTIAL LOST INCOME/MATCHES

- Mini Soccer games 60 (£1,380)
- Junior games 286 (£9,867)
- Adult games 86 (£7,568)
- **Total 432 games £18,824**



Covid impact on cricket



Affected the 2020 season



Season start delayed from April/May to Mid July



9 weeks play lost



40 games cancelled (27 adult and 12 junior)



Income lost **£2,807**



2021/22

No loss of matches so far



- Demand for Football and Cricket has returned to normal levels
- 119 Cricket matches played in summer 2021 (75 adult, 44 Junior)
- Football up to end of December 2021- 687 matches played (122 Mini Soccer, 379 Junior and 186 Adult)

Fareham Borough Playing Pitch Strategy

- Document forms part of the Local Plan
- The purpose of the study is to ensure that a sufficient quantum, type and spatial spread of sporting facility enhancements and new opportunities are provided for in the new Local Plan.
- The assessment considered the adequacy of provision across the Borough as a whole, but also subdivides provision into five sub areas,

5 Sub Areas

- Fareham Wards
- Portchester Wards
- Stubbington and Hill Head Wards
- Titchfield Wards
- Western Wards

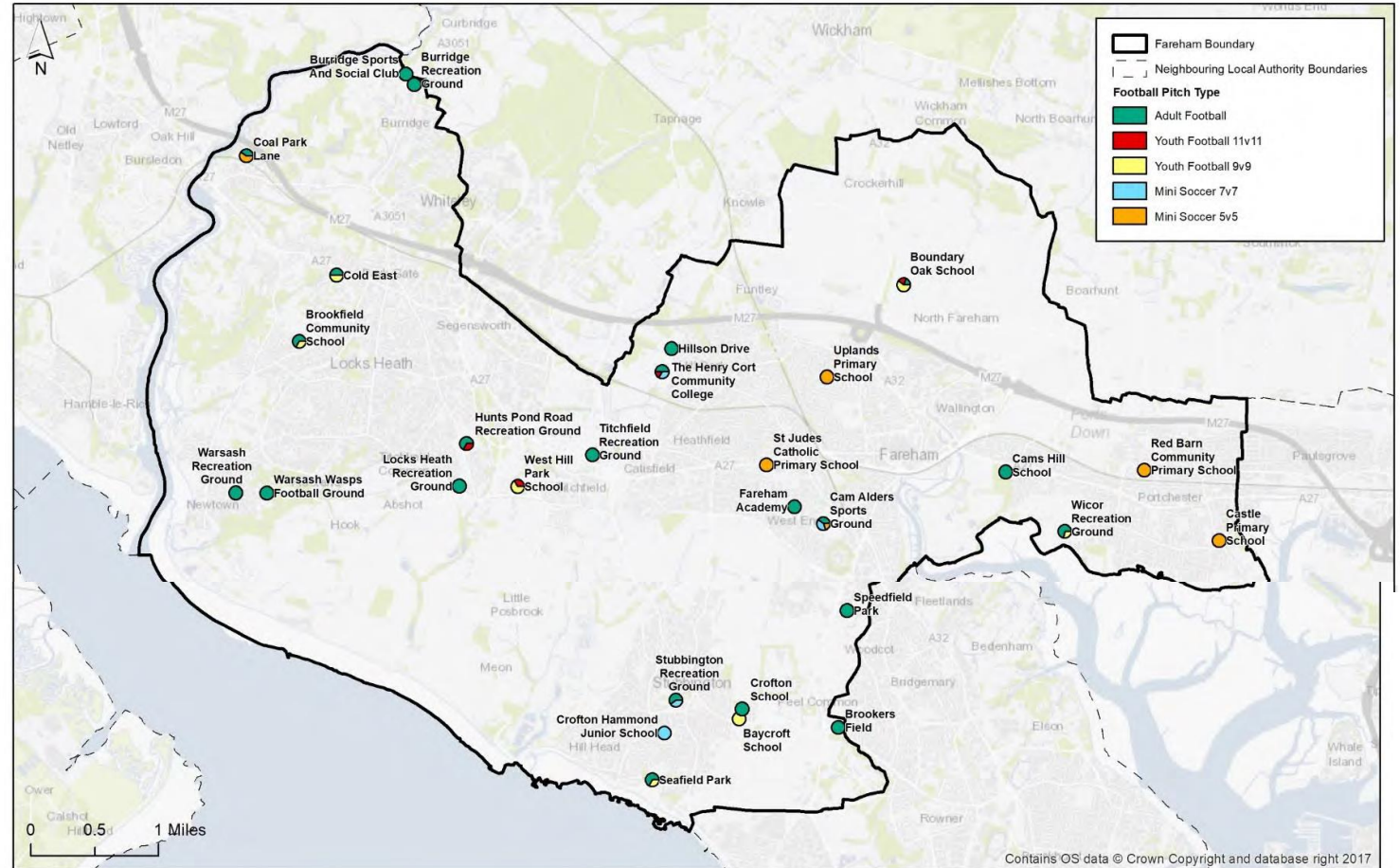
Seven Sports Appraised

- Football - 67 football pitches available for use
- Cricket - 18 grass squares and 8 non turf wickets
- Rugby Union – 6 pitches for community use
- Hockey – 2 artificial pitches
- Bowls – 5 greens (2 artificial grass)
- Tennis – 41 courts
- Netball – 47 outdoor courts (23 for community use)

Football

Key Issues

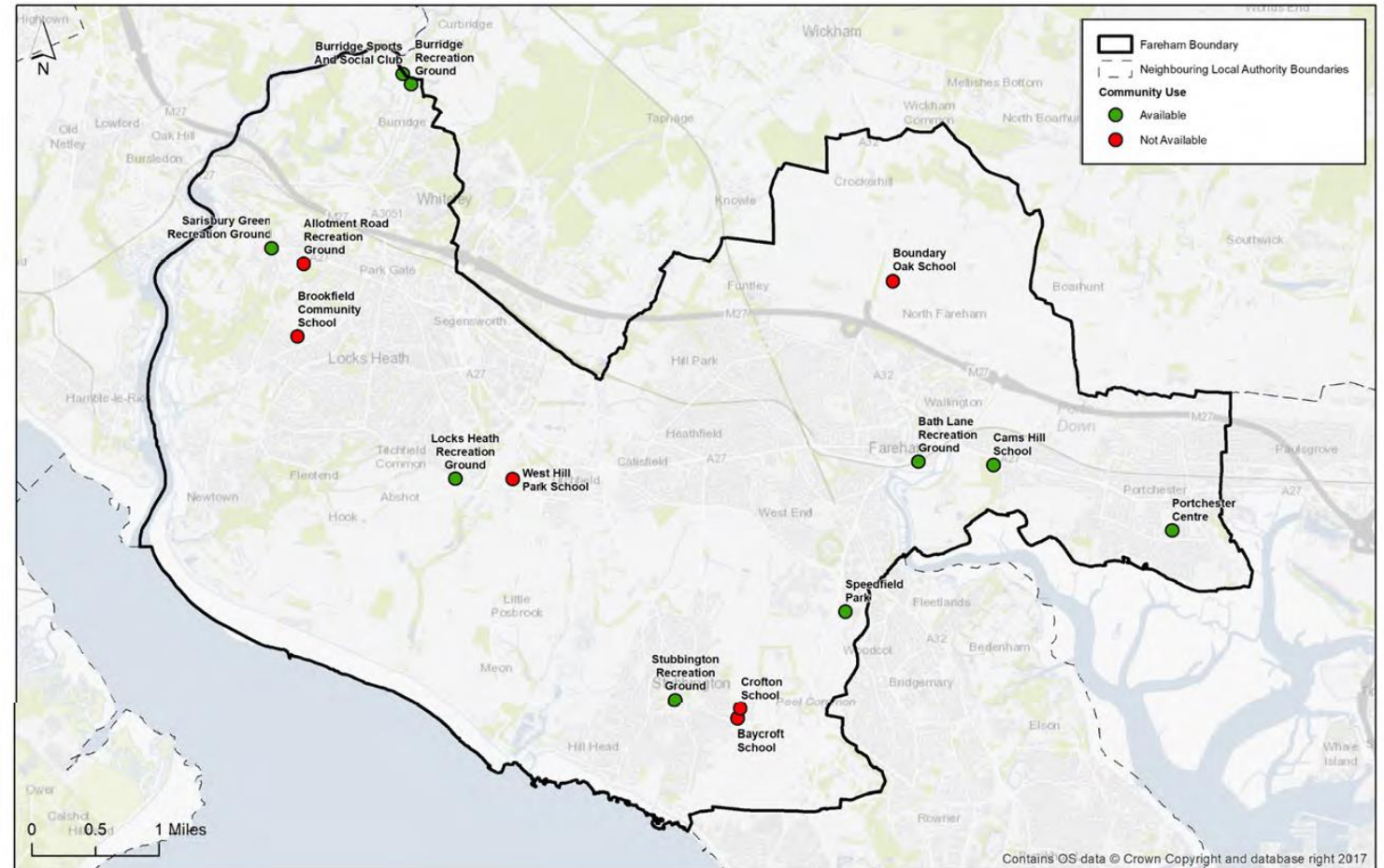
- 190 football teams
- 75% of sites are not secured for community use
- There are no full sized floodlit 3G Artificial Grass Pitches
- deficiencies of youth, 9v9 and 5v5 pitches
- Predicted population growth in Fareham is expected to generate an additional 29 teams



Cricket

Key Issues

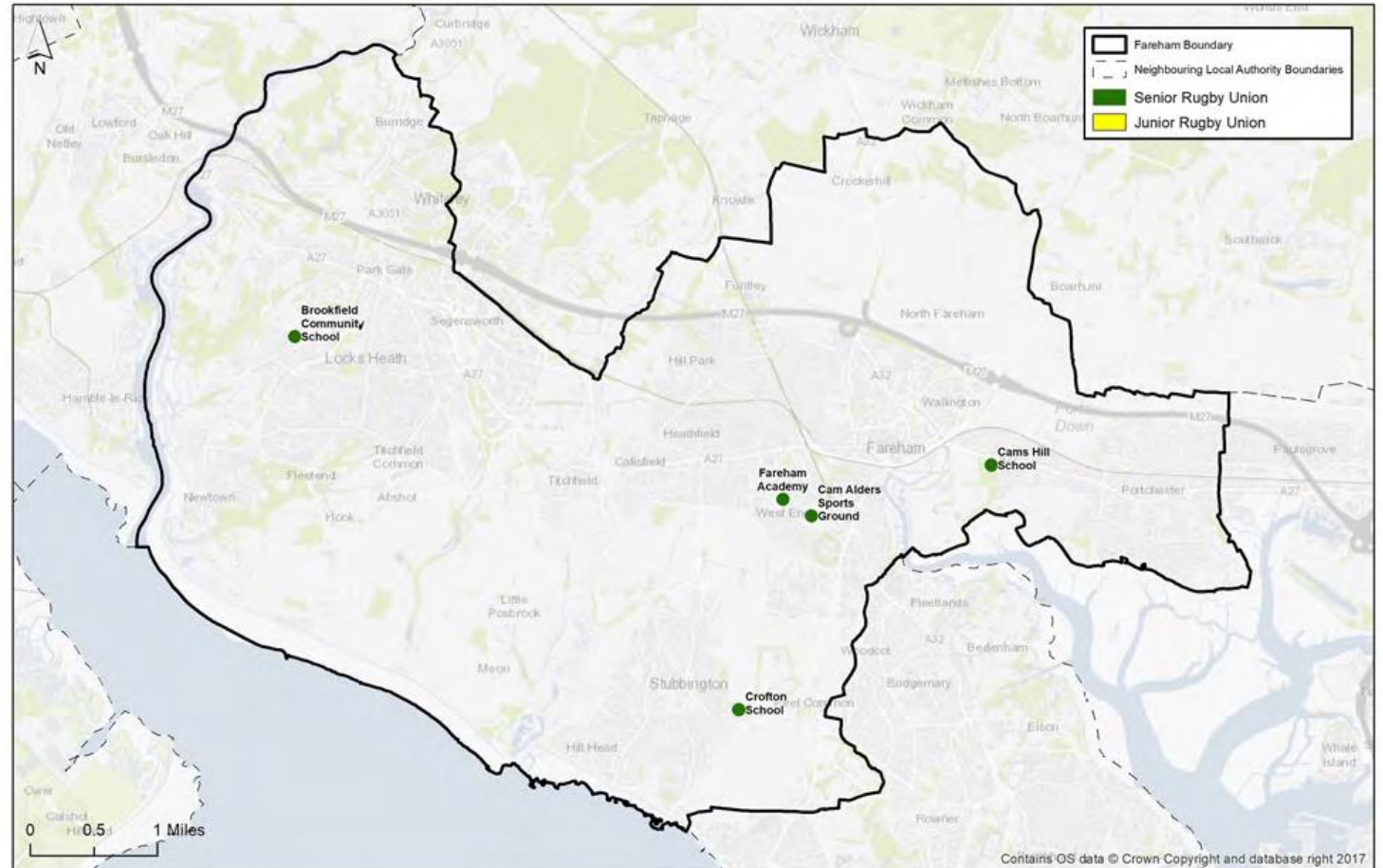
- 6 clubs with 45 teams
- There is enough current capacity for cricket
- little scope to increase participation in cricket with current pitch provision
- High demand and some over use of pitches in the Western Wards.



Rugby Union

- **Key Issues**

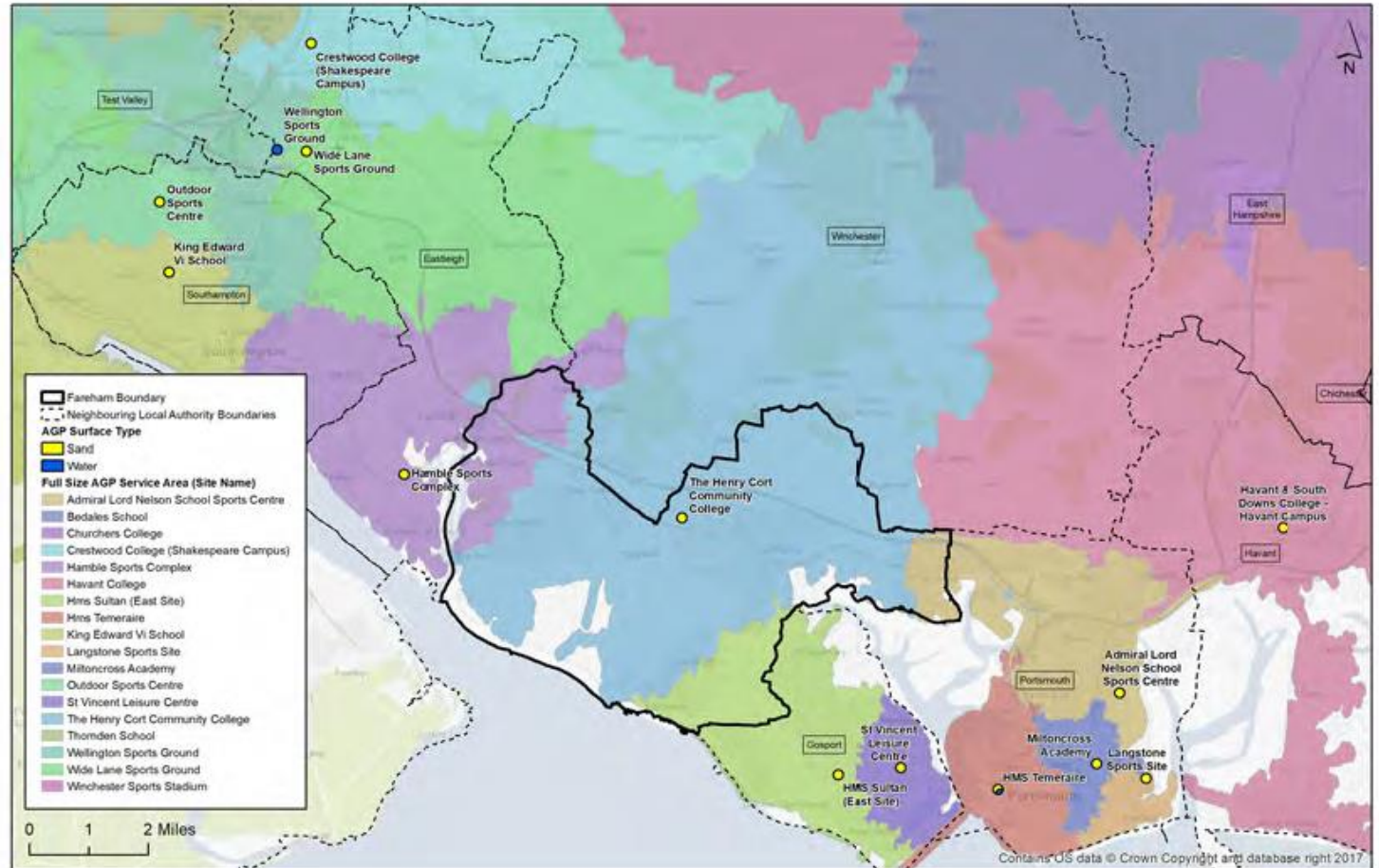
- 2 clubs with 5 senior, 1 colt, 4 junior and 17 mini teams
- Cams pitches overplayed
- Locks Heath Pumas RFC are forced to operate across several sites due to no secure home ground.



Hockey

Key Issues

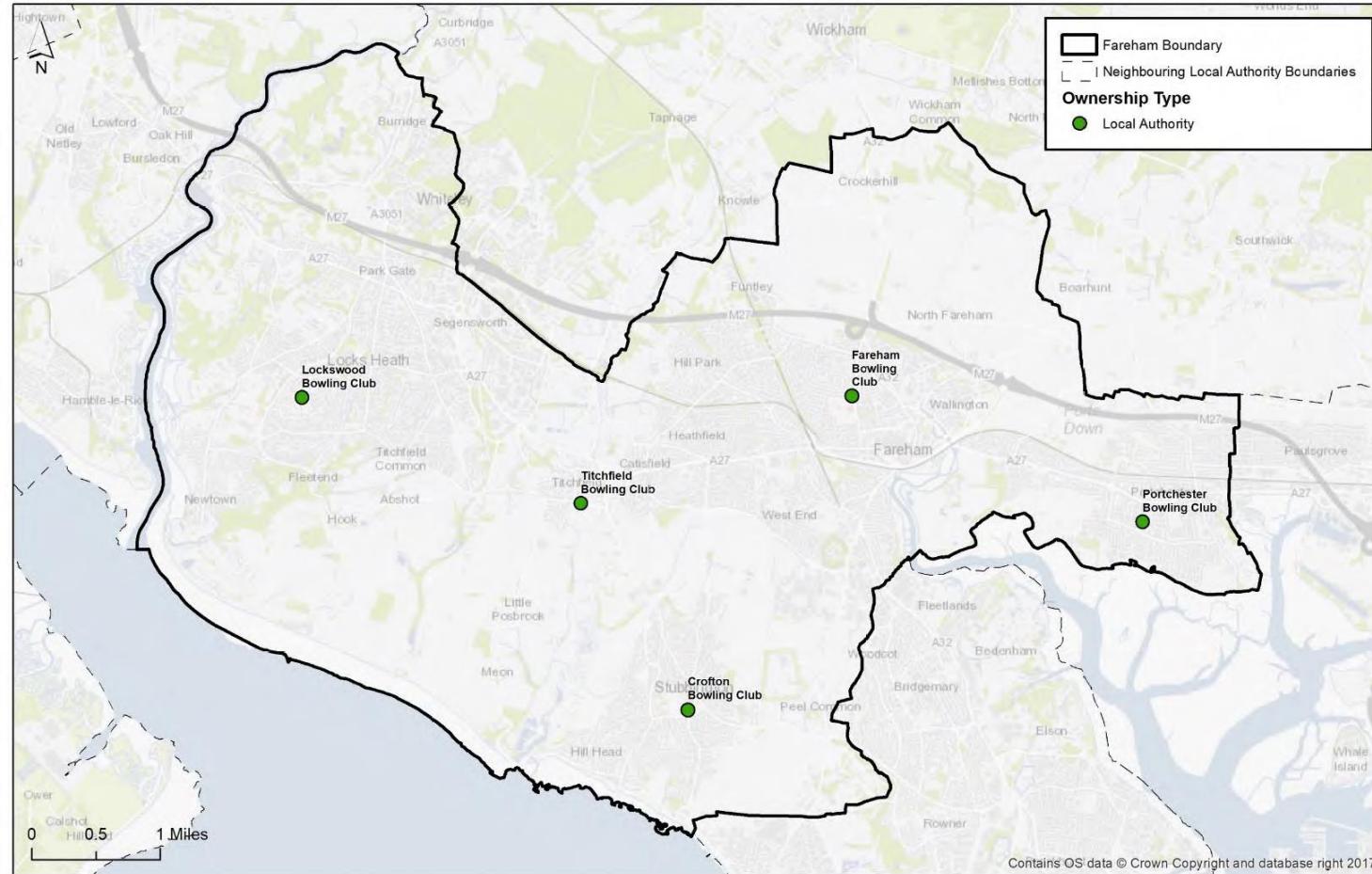
- Only 1 club (Fareham Hockey Club) based at Henry Cort Community college
- Also use HMS Collingwood but not secured
- Little capacity for further growth



Bowls

Key Issues

- All sites considered excellent or good
- Most sites have spare capacity except Crofton
- Good volunteer or community run participation



Tennis

Key Issues

- Good coverage across the Borough
- Lack of non-club-based community courts with pay and play technology
- No covered courts
- No online booking systems
- Shortage of provision for community courts



Netball

Key Issues

- All based in educational sites
- Indoor facilities used for community use, no demand for outside use
- Outdoor courts used for PE and inter-school matches

Does not typically use outdoor facilities for community activity and therefore, no new community accessible outside courts are considered to be required to meet new demand

Summary

- Shortfall in some current provision for football and rugby and also predicted future demand for these sports and some others.
- Funding gap for new provision
- Some shortfall will be met with potential new developments (Wellborne/Newlands/Down End)
- Clubs working with FBC will need to seek funding from their sports governing bodies to assist with facility improvements.